

Molded transformer terminal block - VTRK 4 GY - 3004605

Please be informed that the data shown in this PDF Document is generated from our Online Catalog. Please find the complete data in the user's documentation. Our General Terms of Use for Downloads are valid (<http://phoenixcontact.com/download>)



Molded transformer terminal block, Connection method: Screw connection, Length: 23.4 mm, Width: 12.4 mm, Height: 17.2 mm, Color: gray



Key Commercial Data

Packing unit	1 pc
Minimum order quantity	50 pc
Weight per Piece (excluding packing)	7.56 g
Custom tariff number	85369010
Country of origin	Poland

Technical data

General

Number of connections	4
Color	gray
Insulating material	PA
Flammability rating according to UL 94	V0
Rated surge voltage	4 kV
Rated insulation voltage	250 V
Degree of pollution	3
Overvoltage category	III
Nominal current I_N	25 A
Nominal voltage U_N	voltage data only possible in conjunction with transformer
Number of positions	2

Dimensions

Width	12.4 mm
Length	23.4 mm

Molded transformer terminal block - VTRK 4 GY - 3004605

Technical data

Dimensions

Height	17.2 mm
--------	---------

Connection data

Conductor cross section solid min.	0.2 mm ²
Conductor cross section solid max.	6 mm ²
Conductor cross section flexible min.	0.2 mm ²
Conductor cross section flexible max.	4 mm ²
Conductor cross section AWG min.	24
Conductor cross section AWG max.	10
Conductor cross section flexible, with ferrule without plastic sleeve min.	0.25 mm ²
Conductor cross section flexible, with ferrule without plastic sleeve max.	4 mm ²
Conductor cross section flexible, with ferrule with plastic sleeve min.	0.25 mm ²
Conductor cross section flexible, with ferrule with plastic sleeve max.	2.5 mm ²
2 conductors with same cross section, solid min.	0.2 mm ²
2 conductors with same cross section, solid max.	1.5 mm ²
2 conductors with same cross section, stranded min.	0.2 mm ²
2 conductors with same cross section, stranded max.	1.5 mm ²
2 conductors with same cross section, stranded, ferrules without plastic sleeve, min.	0.25 mm ²
2 conductors with same cross section, stranded, ferrules without plastic sleeve, max.	1.5 mm ²
2 conductors with same cross section, stranded, TWIN ferrules with plastic sleeve, min.	0.5 mm ²
2 conductors with same cross section, stranded, TWIN ferrules with plastic sleeve, max.	2.5 mm ²
Connection method	Screw connection
Stripping length	8 mm
Internal cylindrical gage	A4
Screw thread	M3
Tightening torque, min	0.6 Nm
Tightening torque max	0.8 Nm

Standards and Regulations

Connection in acc. with standard	CSA
Flammability rating according to UL 94	V0

Classifications

eCl@ss

eCl@ss 4.0	27141110
------------	----------

Molded transformer terminal block - VTRK 4 GY - 3004605

Classifications

eCl@ss

eCl@ss 4.1	27141110
eCl@ss 5.0	27141110
eCl@ss 5.1	27141110
eCl@ss 6.0	27141110
eCl@ss 7.0	27141110
eCl@ss 8.0	27141110

ETIM

ETIM 2.0	EC001283
ETIM 3.0	EC001283
ETIM 4.0	EC000398
ETIM 5.0	EC000398

UNSPSC

UNSPSC 6.01	30211811
UNSPSC 7.0901	39121410
UNSPSC 11	39121410
UNSPSC 12.01	39121410
UNSPSC 13.2	39121410

Approvals

Approvals

Approvals

CSA / UL Recognized / cUL Recognized / EAC / cULus Recognized


Ex Approvals


Approvals submitted


Approval details

Molded transformer terminal block - VTRK 4 GY - 3004605


Approvals

CSA 		
	B	D
mm ² /AWG/kcmil	24-10	24-10
Nominal current I _N	35 A	10 A
Nominal voltage U _N	150 V	300 V

UL Recognized 		
	B	C
mm ² /AWG/kcmil	30-10	30-10
Nominal current I _N	30 A	30 A
Nominal voltage U _N	300 V	300 V

cUL Recognized 		
	B	C
mm ² /AWG/kcmil	30-10	30-10
Nominal current I _N	30 A	30 A
Nominal voltage U _N	300 V	300 V

EAC

cULus Recognized 
--

Accessories

Accessories

Fuse

Molded transformer terminal block - VTRK 4 GY - 3004605

Accessories

Fuse - SI FORM C 2 A - 0913689



Flat-type plug-in fuse, type C, color code: gray, nominal current: 2 A

Fuse - SI FORM C 3 A DIN 72581 - 0913773



Flat-type plug-in fuse, type C, color code: violet, nominal current: 3 A

Fuse - SI FORM C 4 A DIN 72581 - 0913731



Flat-type plug-in fuse, type C, color code: pink, nominal current: 4 A

Fuse - SI FORM C 5 A DIN 72581 - 0913692



Flat-type plug-in fuse, type C, color code: light brown, nominal current: 5 A

Fuse - SI FORM C 7,5 A DIN 72581 - 0913702



Flat-type plug-in fuse, type C, color code: brown, nominal current: 7.5 A

Molded transformer terminal block - VTRK 4 GY - 3004605

Accessories

Fuse - SI FORM C 10 A DIN 72581 - 0913715



Flat-type plug-in fuse, type C, color code: red, nominal current: 10 A

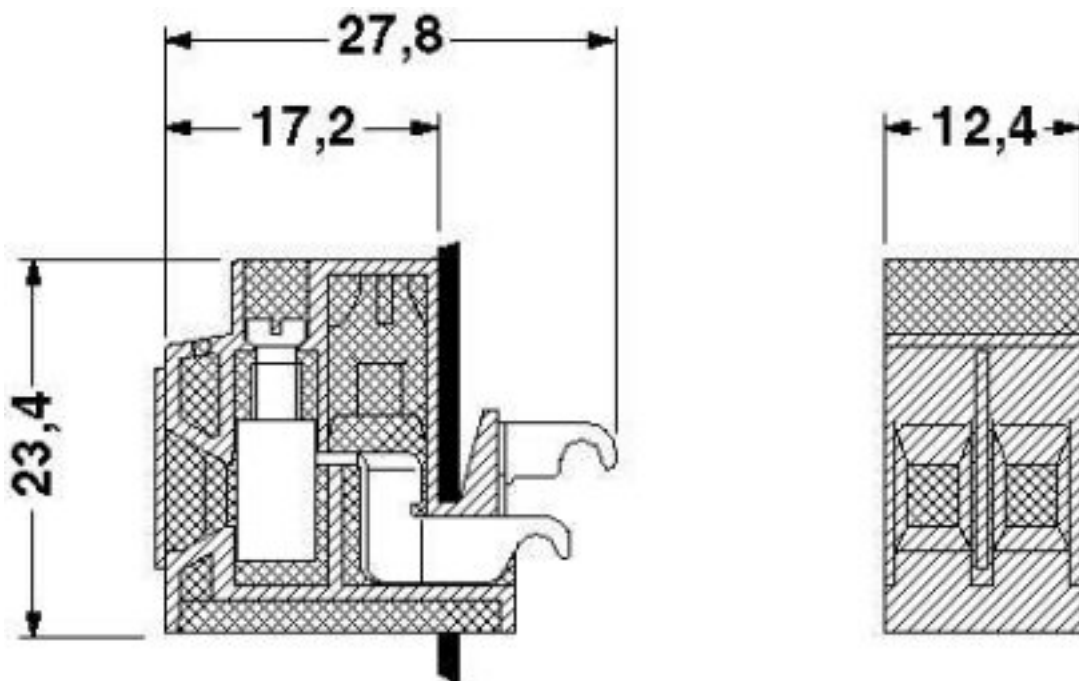
Mounting material

Transformer terminal block - VTRK 4-SI/C AH - 2702526

Covering hood, for covering the fuse, is snapped on later, made of transparent plastic

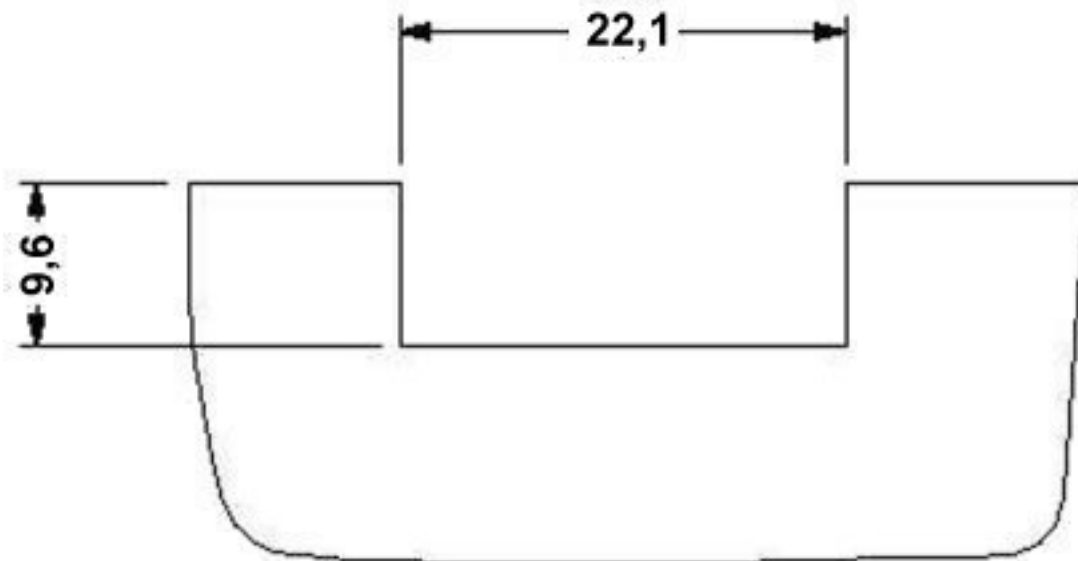
Drawings

Dimensional drawing



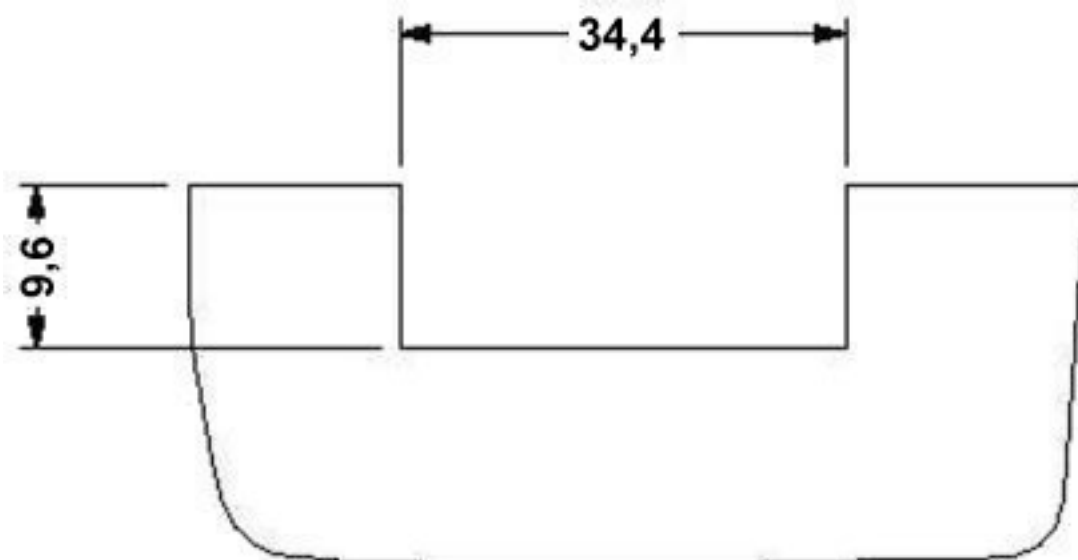
Molded transformer terminal block - VTRK 4 GY - 3004605

Dimensional drawing



Housing cutout (panel thickness 1.8) for two transformer terminal blocks

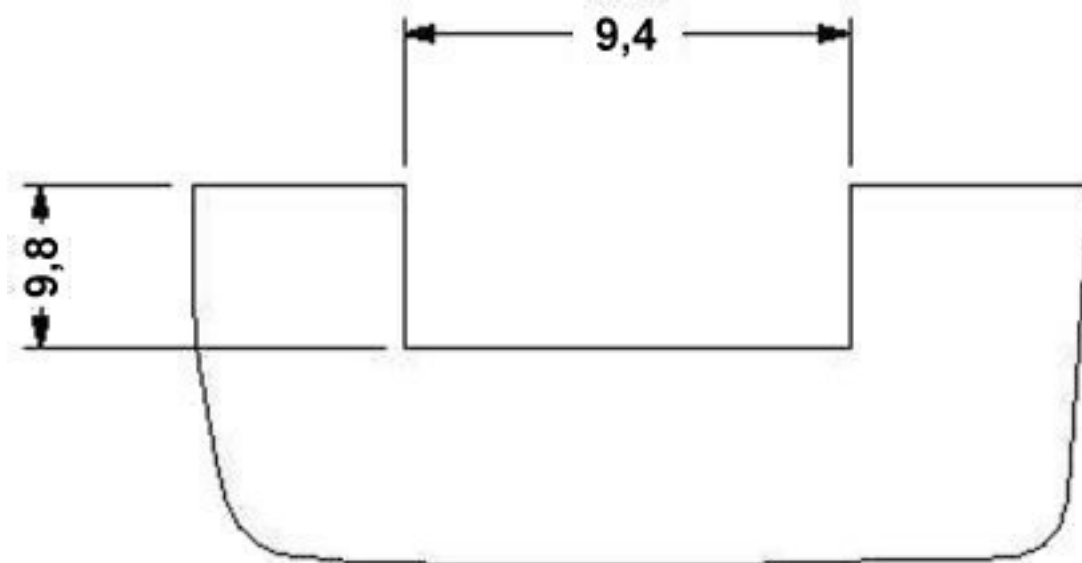
Dimensional drawing



Housing cutout (panel thickness 1.8) for three transformer terminal blocks

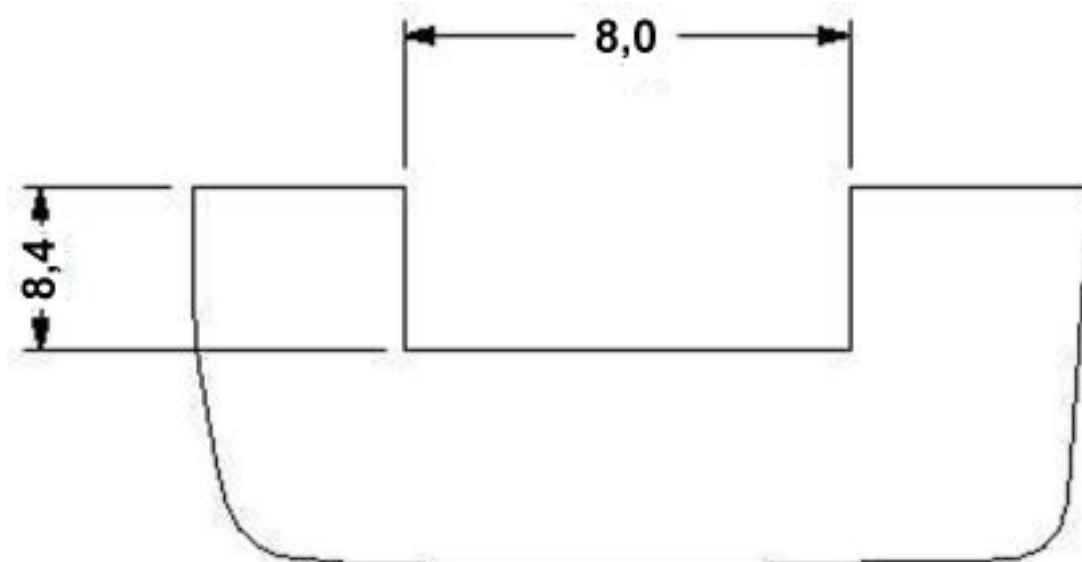
Molded transformer terminal block - VTRK 4 GY - 3004605

Dimensional drawing



Housing cutout (panel thickness 1.9) for one transformer terminal block

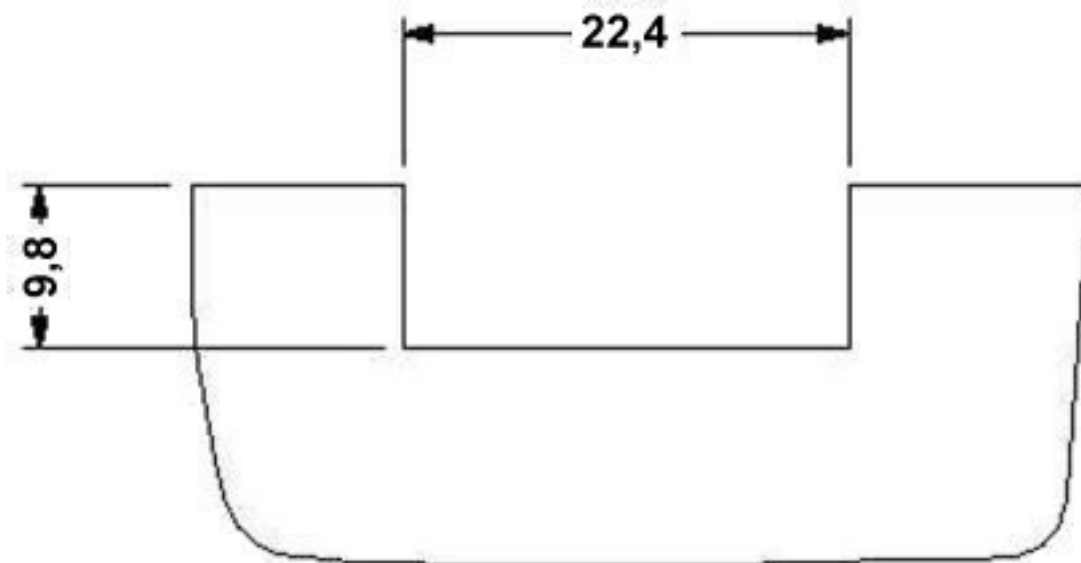
Dimensional drawing



Housing cutout (panel thickness 1.2) for one transformer terminal block

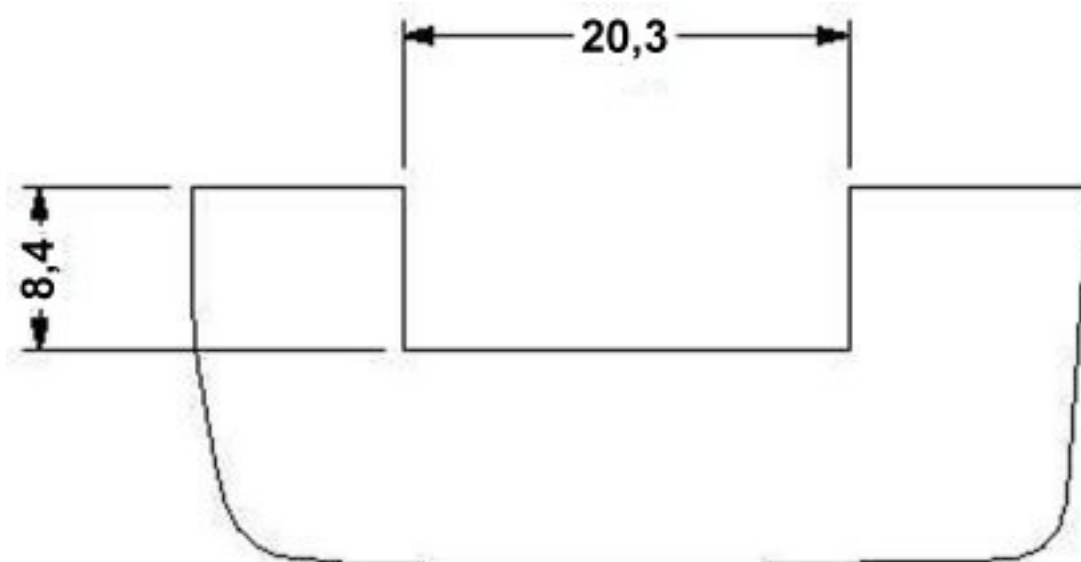
Molded transformer terminal block - VTRK 4 GY - 3004605

Dimensional drawing



Housing cutout (panel thickness 1.9) for two transformer terminal blocks

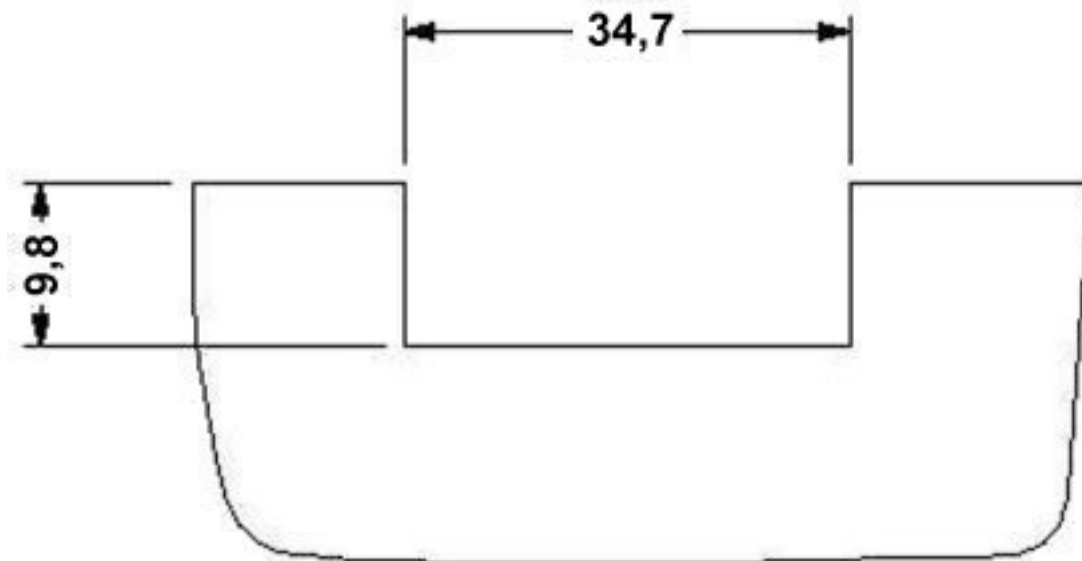
Dimensional drawing



Housing cutout (panel thickness 1.2) for two transformer terminal blocks

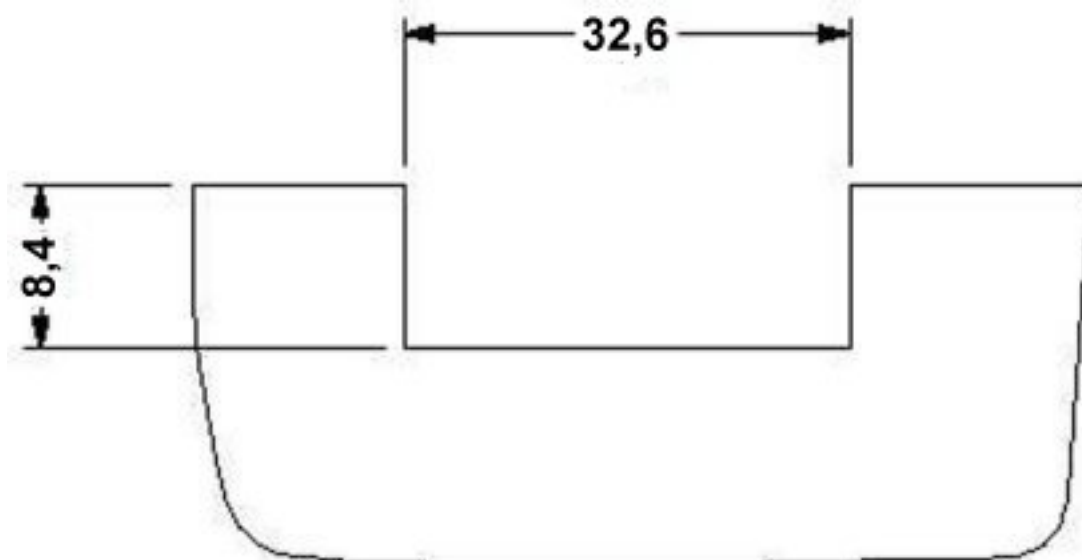
Molded transformer terminal block - VTRK 4 GY - 3004605

Dimensional drawing



Housing cutout (panel thickness 1.9) for three transformer terminal blocks

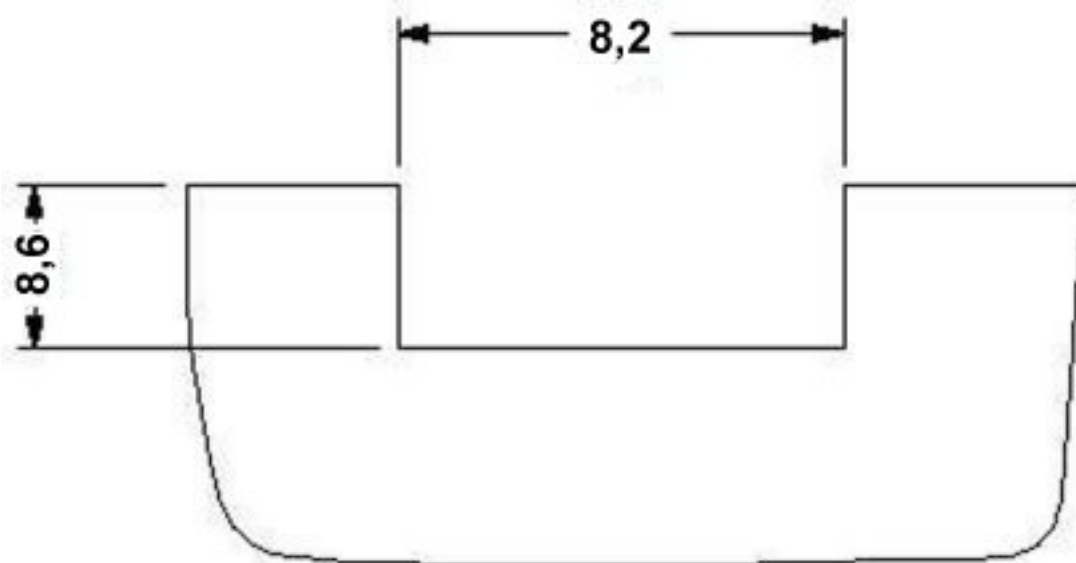
Dimensional drawing



Housing cutout (panel thickness 1.2) for three transformer terminal blocks

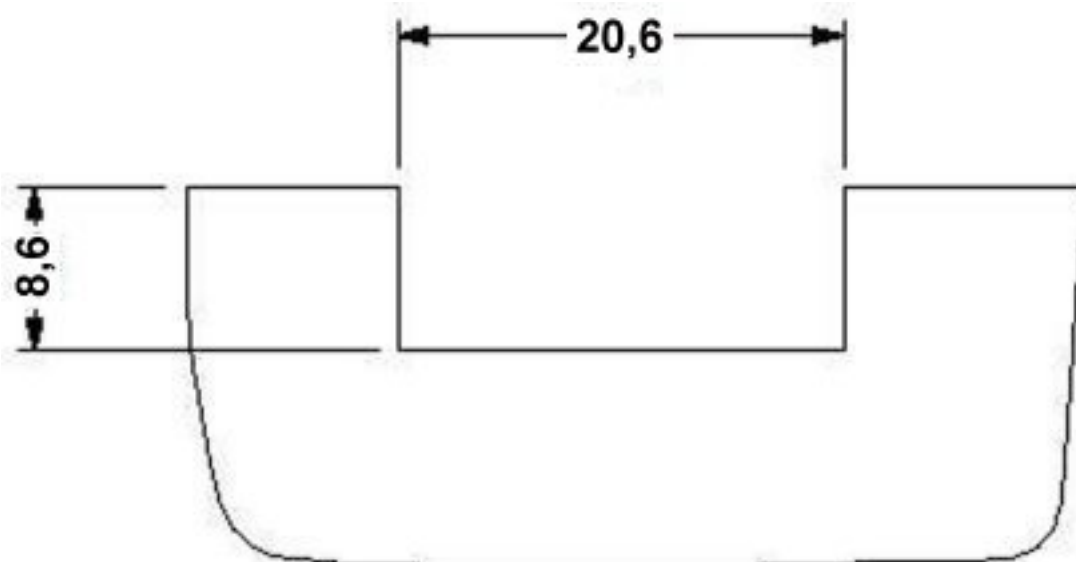
Molded transformer terminal block - VTRK 4 GY - 3004605

Dimensional drawing



Housing cutout (panel thickness 1.3) for one transformer terminal block

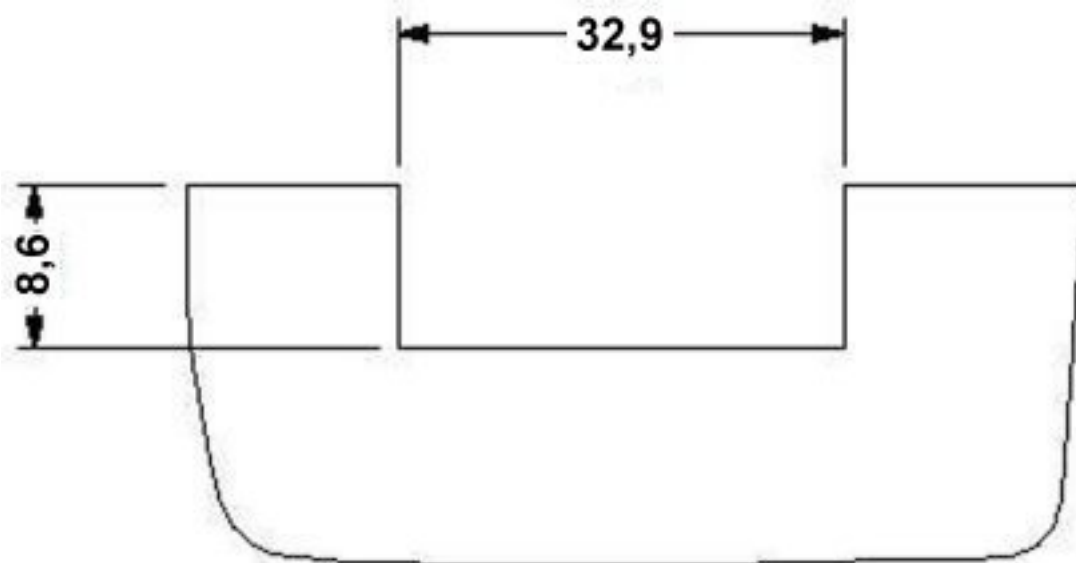
Dimensional drawing



Housing cutout (panel thickness 1.3) for two transformer terminal blocks

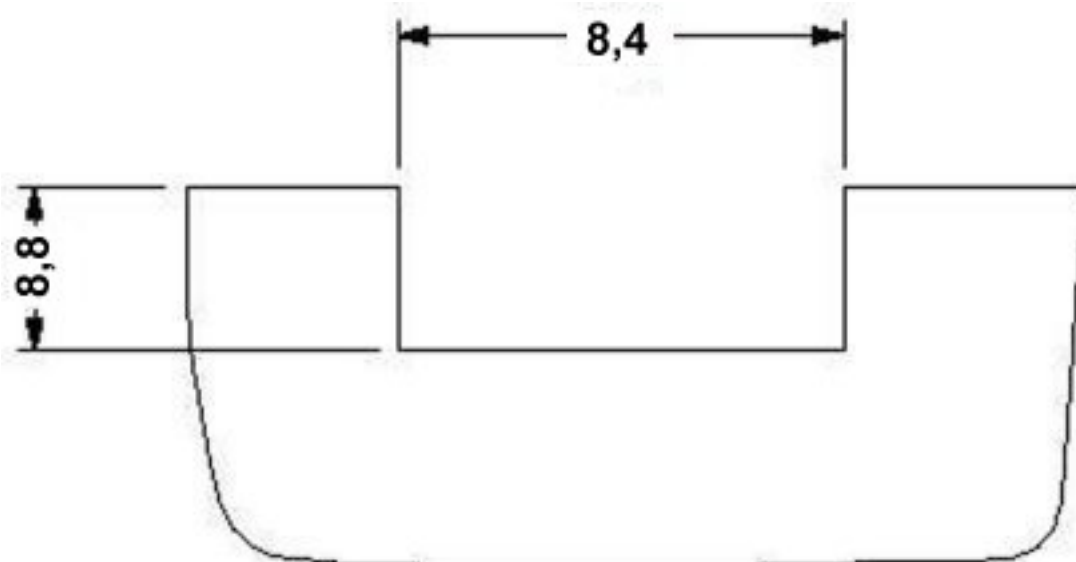
Molded transformer terminal block - VTRK 4 GY - 3004605

Dimensional drawing



Housing cutout (panel thickness 1.3) for three transformer terminal blocks

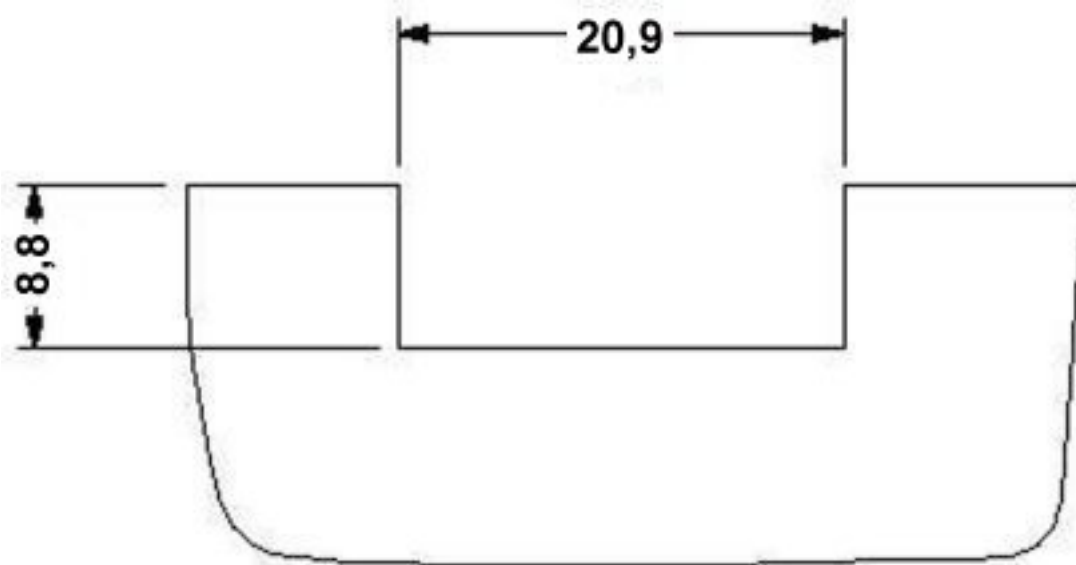
Dimensional drawing



Housing cutout (panel thickness 1.4) for one transformer terminal block

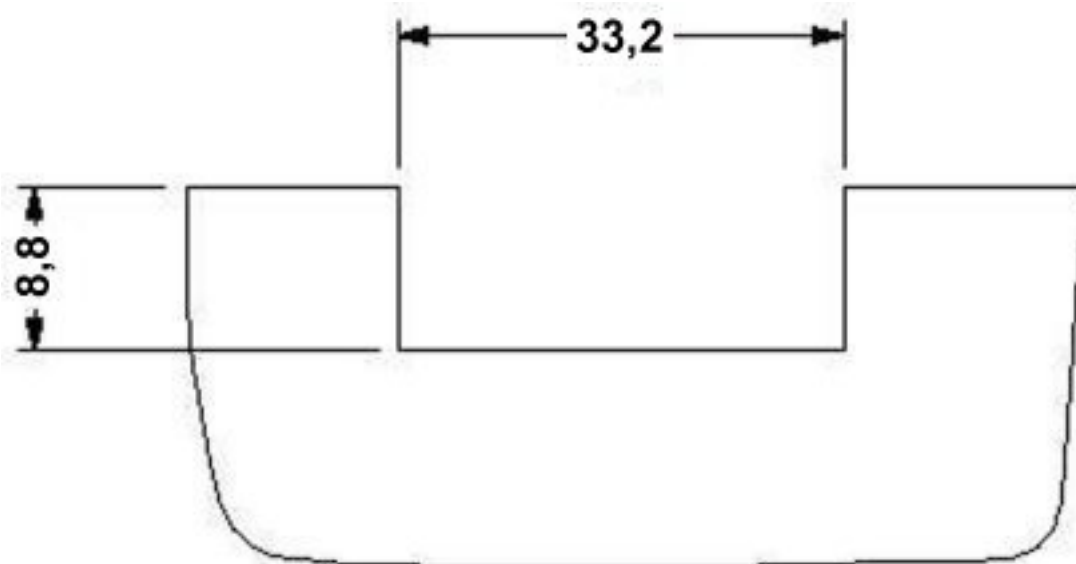
Molded transformer terminal block - VTRK 4 GY - 3004605

Dimensional drawing



Housing cutout (panel thickness 1.4) for two transformer terminal blocks

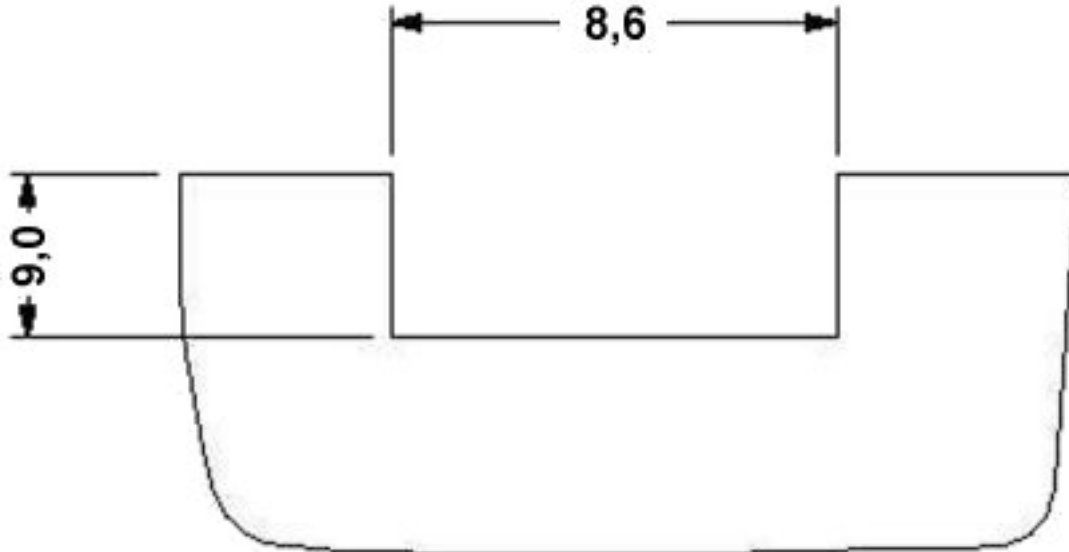
Dimensional drawing



Housing cutout (panel thickness 1.4) for three transformer terminal blocks

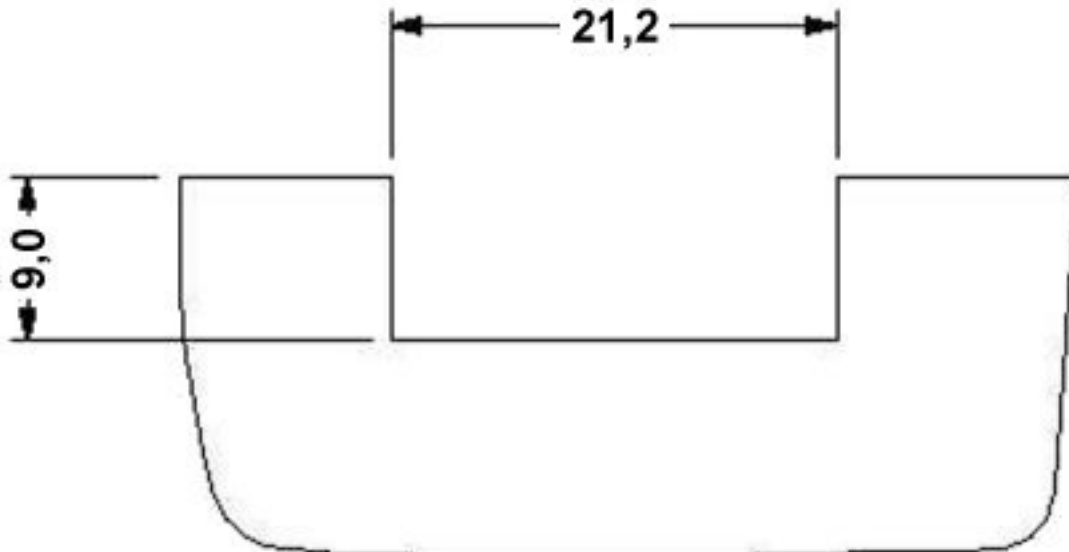
Molded transformer terminal block - VTRK 4 GY - 3004605

Dimensional drawing



Housing cutout (panel thickness 1.5) for one transformer terminal block

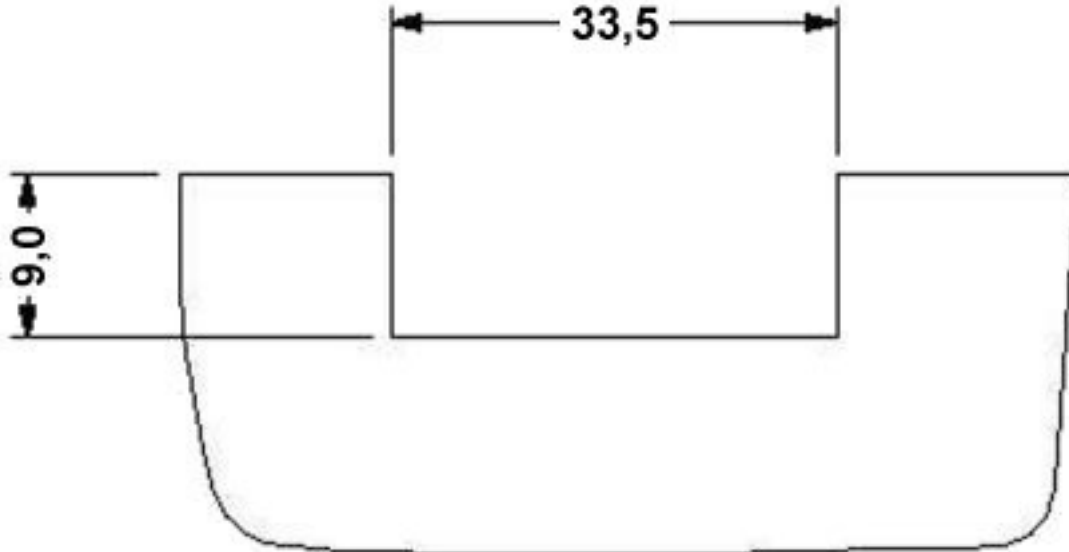
Dimensional drawing



Housing cutout (panel thickness 1.5) for two transformer terminal blocks

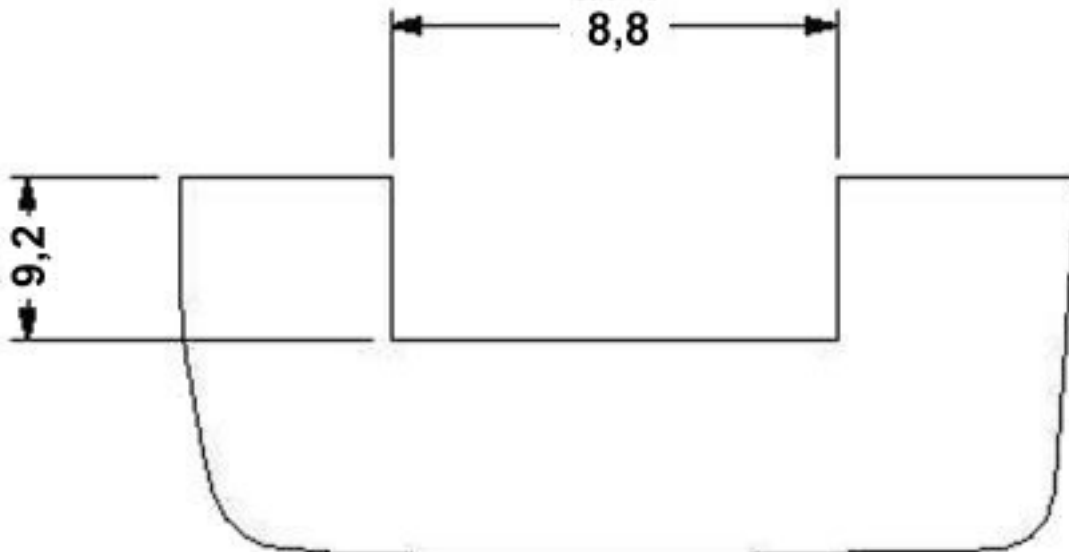
Molded transformer terminal block - VTRK 4 GY - 3004605

Dimensional drawing



Housing cutout (panel thickness 1.5) for three transformer terminal blocks

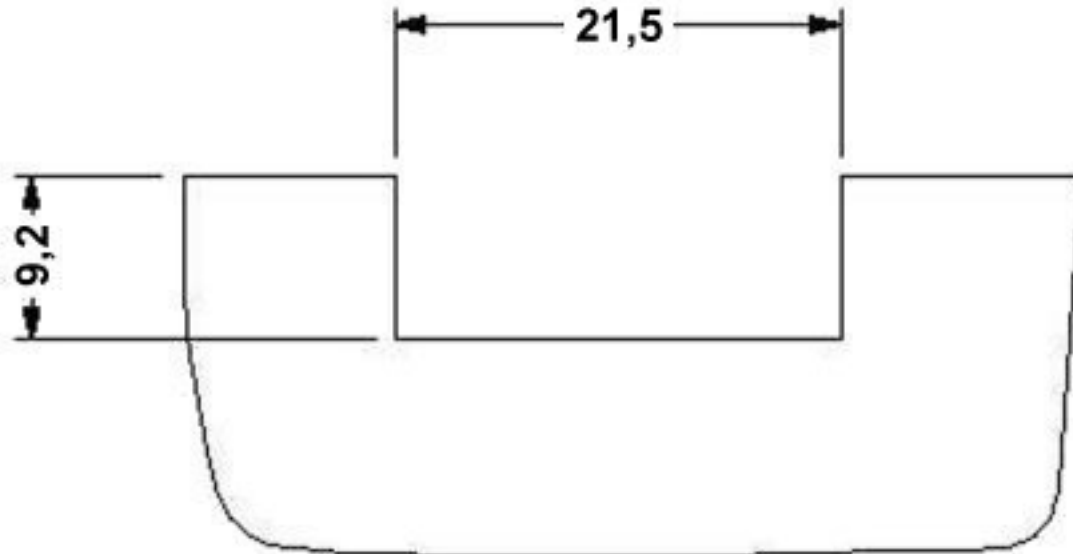
Dimensional drawing



Housing cutout (panel thickness 1.6) for one transformer terminal block

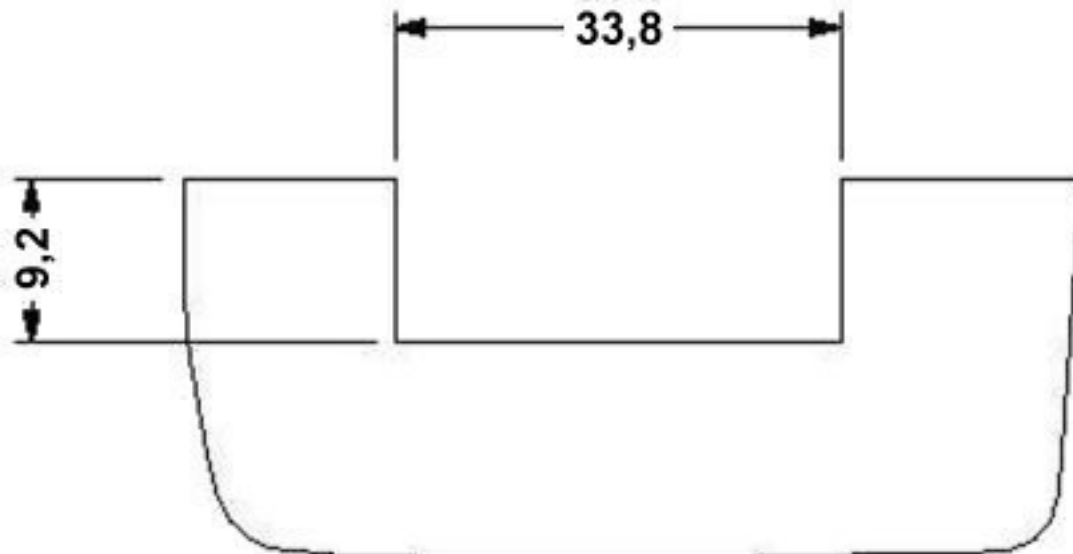
Molded transformer terminal block - VTRK 4 GY - 3004605

Dimensional drawing



Housing cutout (panel thickness 1.6) for two transformer terminal blocks

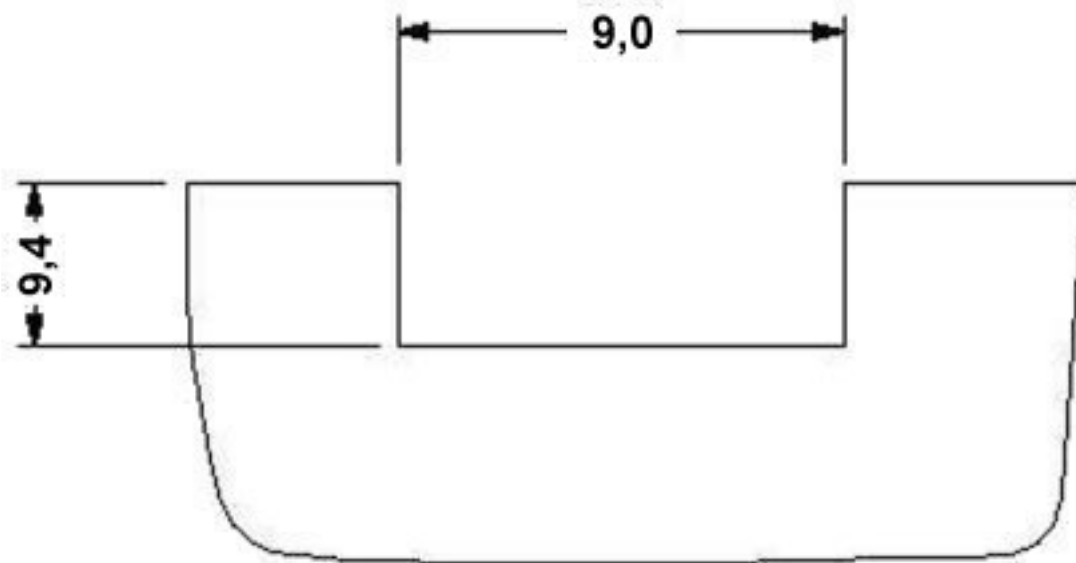
Dimensional drawing



Housing cutout (panel thickness 1.6) for three transformer terminal blocks

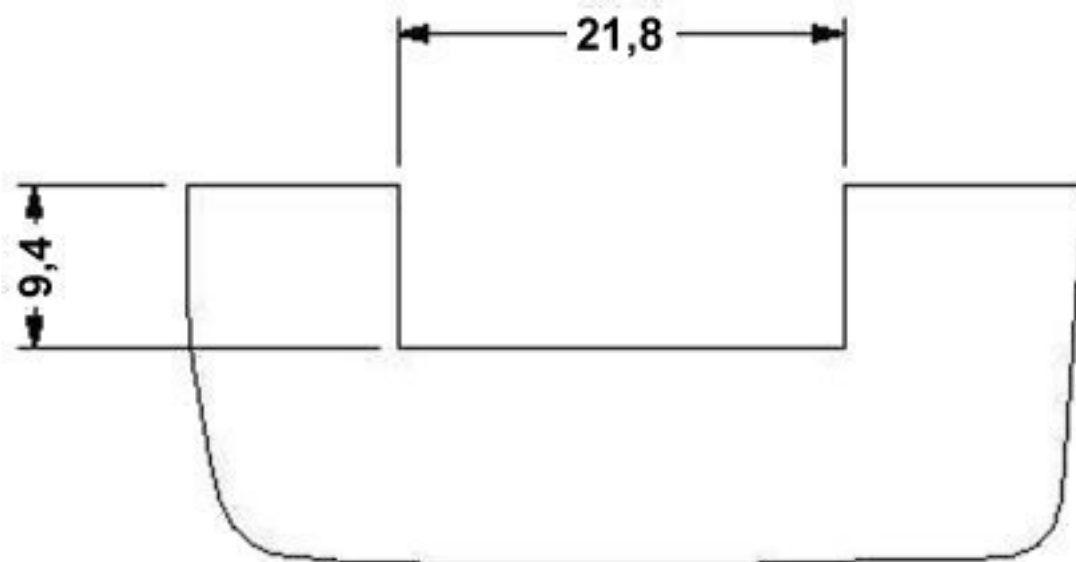
Molded transformer terminal block - VTRK 4 GY - 3004605

Dimensional drawing



Housing cutout (panel thickness 1.7) for one transformer terminal block

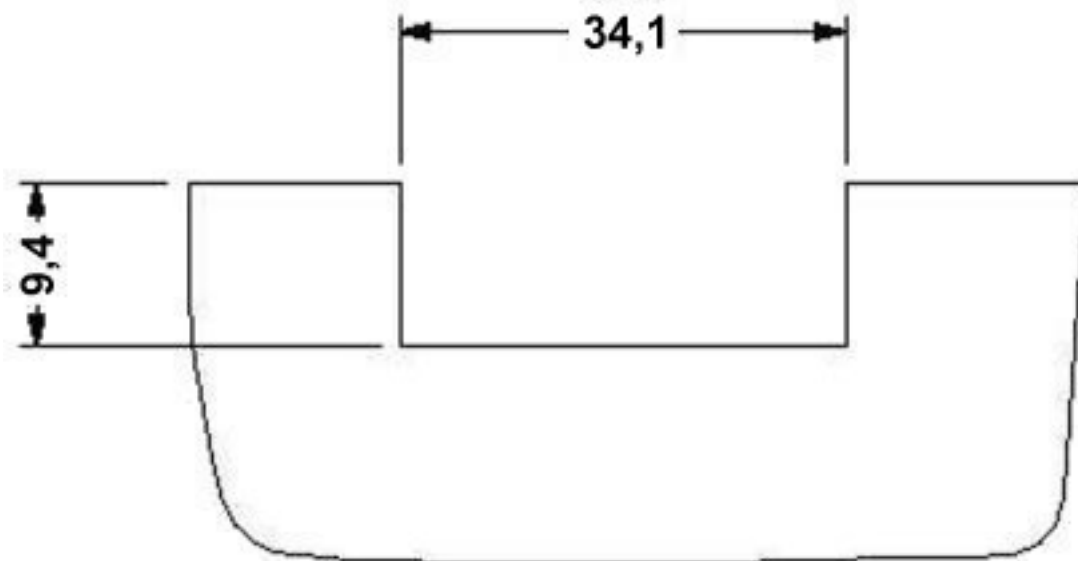
Dimensional drawing



Housing cutout (panel thickness 1.7) for two transformer terminal blocks

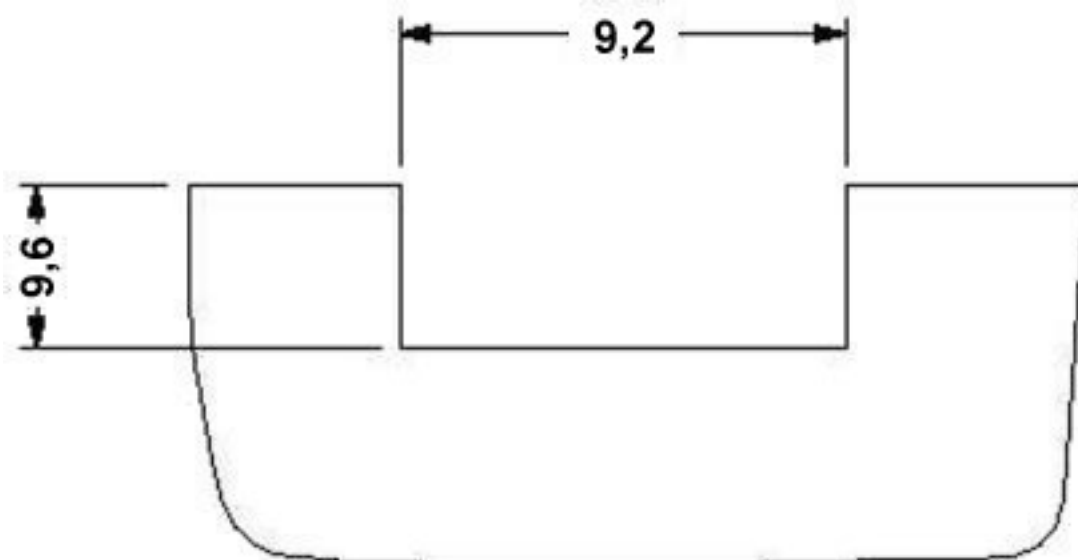
Molded transformer terminal block - VTRK 4 GY - 3004605

Dimensional drawing



Housing cutout (panel thickness 1.7) for three transformer terminal blocks

Dimensional drawing



Housing cutout (panel thickness 1.8) for one transformer terminal block